

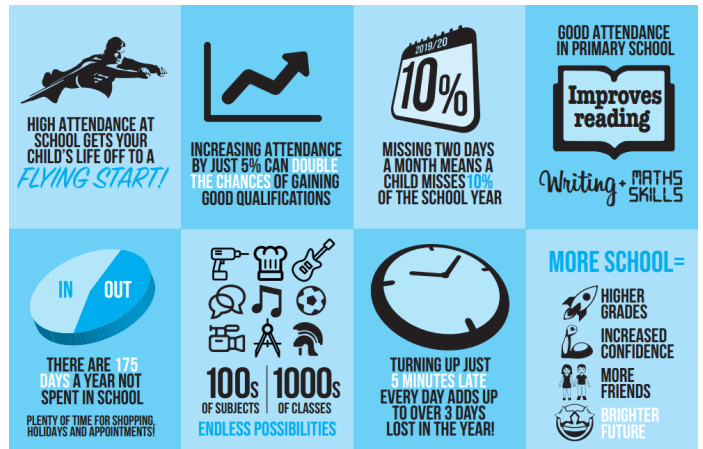


Hello,

I hope that you have had a good week.

**Attendance:**

Over the past few weeks, attendance has started to drop. It is so important for your child to be in school. Here is a visual that Shows the effects of poor attendance.



**World Book Day**

The children and staff had a great time celebrating. Don't forget to use your voucher to get a free book. Thank you for all of your support.



Have a good weekend,

Miss Rebecca Smith.

Congratulations to our badge winners this week...

**Richmond Class:**

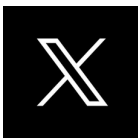
Noureen –third white badge

**Macaulay Class:**

Bella, Esa, Ali, Kelbi, Lola, Louie, Awesome,  
Aisha, Connor, Noah, Luna, Yusra – first white badge



Search: KnightonTMET <https://twitter.com/knightontmet>



Please make sure that you follow us on X formerly known as Twitter to keep up to date with news and events but also see what your children are up to whilst in school!

**Enquiries: [office@knighton-tmet.uk](mailto:office@knighton-tmet.uk)**



**Date: 07/03/25**

**Issue: 24**

**Principal: Miss Rebecca Smith**



**Wednesday 12<sup>th</sup> March** – Y5 assembly  
@9:05am

**Friday 14<sup>th</sup> March** – Y6 photos

**Tuesday 18<sup>th</sup> March** – Y4 assembly  
@9:05am

**Thursday 20<sup>th</sup> March** – Recognising  
National Down's Syndrome Day – wear  
something that makes you proud to be you

**Friday 21<sup>st</sup> March** – Comic Relief – non-  
uniform

## Attendance



A huge congratulations goes to Richmond class, for amazing attendance and to Lansdowne class for excellent punctuality this week.

Please remember that gates open at **8.40am** and children must be in class by **8.50am**.

Also, please familiarise yourself with NHS guidance on when to keep your child from school.

[Is my child too ill for school? – NHS](#)

Thank you,  
Miss Key.

Class	Attendance %
Hawkins	92.5%
Bloomfield	89.1%
Macaulay	92.7%
Lansdowne	98.3%
Richmond	94.4%
Hughenden	92.5%
Lothair	94.8%
Whole School Attendance	93.4%



**Primary Leadership Team**  
#collaboration #community

### Comic Relief

On Friday 21<sup>st</sup> March, children may wear non-uniform and make a suggested donation of £1 to Comic Relief.



contribution to the community

### Character muscle of the week

#### Curiosity:

Wanting to know or learn something.  
Asking questions to learn more.



Search: KnightonTMET

<https://twitter.com/knightontmet>

Please make sure that you follow us on X formerly known as Twitter to keep up to date with news and events but also see what your children are up to whilst in school!



# Support for children with SEN

The screenshot shows a Padlet interface with the title "Knighton Mead SEND Padlet For parents". It is divided into seven columns:

- Leicester City:** Contains a circular diagram with four segments (green, blue, orange, red) and text about the SEND approach.
- Communication and Interaction:** Discusses communication and interaction skills in children, mentioning the Communication and Interaction Checklist (CIC).
- Cognition and Learning:** Focuses on learning difficulties, including dyslexia and dyscalculia, with a link to the Dyslexia Foundation.
- Social, Emotional and Mental Health (SEMH):** Addresses social skills, anxiety, and mental health, with a link to "Supporting and child with ADHD".
- Physical and Sensory:** Discusses sensory processing issues and provides a link to "Supporting a child with sensory difficulties".
- Useful Websites:** Lists various external resources.
- Useful Resources:** Includes links to "Leicester City Parent/Career Forum", "Low Mood: Young People's", and "Chat Autism".

This PADLET (click image to be taken directly to the PADLET) contains links to a comprehensive array of services designed to support your child. It outlines the four areas of Special Educational Needs (SEN) and the corresponding support available within each category. Additionally, this resource is **regularly updated** with new links, so be sure to stay informed. If you have any questions, feel free to contact the school and we will be happy to help.

Find all the information you need about how we support children with SEN at Knighton Mead here:

<https://www.knighton-tmet.uk/our-academy/inclusion/send/>

## Support for autistic people living in Leicester, Leicestershire and Rutland



Text: **07312 277097**

or

Scan the  
QR code to  
start a chat



Text a qualified health professional  
from our Specialist Autism Team  
about:

- Emotional wellbeing
- Healthy lifestyle
- Healthy relationships
- Understanding autism
- Signposting to advice and support
- Assessment and diagnosis advice

The service is available 9am-5pm every week day, excluding bank holidays. The text line stays open during the school holidays. The service can answer queries from autistic people, their families, carers and allies.



A website for specialist advice and  
information about autism related topics,  
plus a directory of local support services  
for autistic people and their families or  
carers.

Scan the QR code  
or visit:



[www.leicspart.nhs.uk/autism-space/](http://www.leicspart.nhs.uk/autism-space/)